



INDIGO Biosciences, Inc.

The Nuclear Receptor Company™

**Human Mineralocorticoid Receptor
(NR3C2, MR)
Reporter Assay System**

3x 32 Assays in 96-well Format
Product # IB00501-32

■

Technical Manual
(version 3.3)

www.indigobiosciences.com

1981 Pine Hall Road, State College, PA, 16801, USA

Customer Service:

814-234-1919; FAX 814-272-0152; customerserv@indigobiosciences.com

Technical Service:

814-234-1919; techserv@indigobiosciences.com



Human MR Reporter Assay System 3x 32 Assays in 96-well Format

I. Description	3
▪ The Assay System	
▪ The Assay Chemistry	
II. Product Components & Storage Conditions	5
III. Alternative Applications for this Reporter Assay	6
IV. Materials to be Supplied by the User	7
V. Assay Procedure	
<i>DAY 1</i>	10
▪ Alternative Step 2A: Agonist Dose-Response Assays.....	11
▪ Alternative Step 2B: Screening for Agonist Activities <i>via</i> Single-Point Assay	12
▪ Alternative Step 2C: Antagonist Dose-Response Assays	13
▪ Alternative Step 2D: Screening for Antagonist Activities <i>via</i> Single-Point Assay.....	14
<i>DAY 2</i>	16
VI. Related Products	17
VII. Limited Use Disclosures	18
APPENDIX 1: Sample Dilution Scheme	19
APPENDIX 2: Signal Stability of the Nuclear Receptor Reporter Assay	20

I. Description

▪ The Assay System ▪

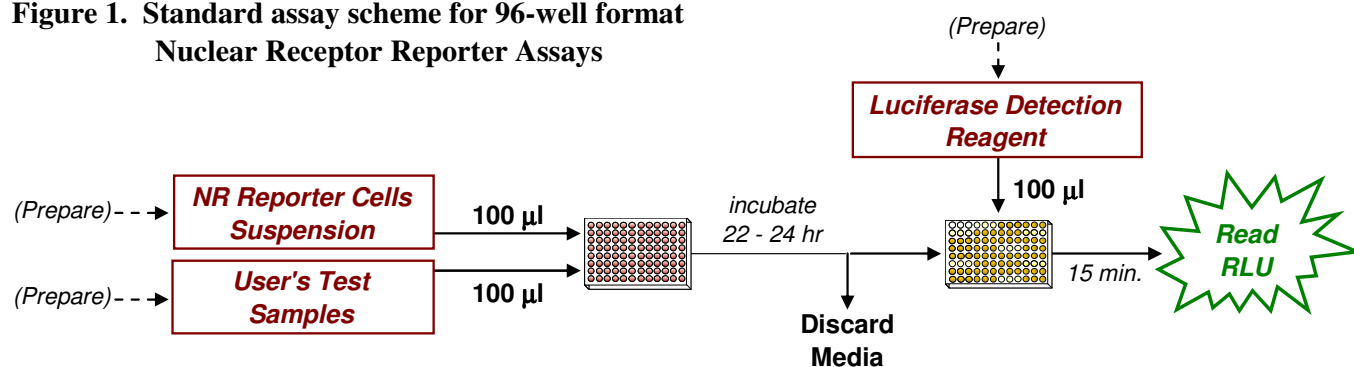
INDIGO Bioscience's Nuclear Receptor Reporter Assays are all-inclusive cell-based assay systems. In addition to nuclear receptor Reporter Cells, this kit provides two optimized media for use during cell culture and in diluting the user's test samples, a positive-control agonist, Luciferase Detection Buffer & Reagent, and a cell culture-ready assay plate.

Reporter Cells are prepared using INDIGO's proprietary **CryoMite™** process. This cryo-preservation method yields high cell viability post-thaw, and provides the convenience of immediately dispensing healthy, division-competent reporter cells into assay plates. There is no need for intermediate spin-and-wash steps, viability determinations, or cell titer adjustments.

This nuclear receptor assay system utilizes proprietary non-human mammalian cells engineered to provide constitutive, high-level expression of **Human Mineralocorticoid Receptor (NR3C2)**, a ligand-dependent transcription factor commonly referred to as **MR**. Because these cells incorporate a MR-responsive luciferase reporter gene, quantifying expressed luciferase activity provides a sensitive surrogate measure of MR activity in the treated cells. The primary application of this reporter assay system is in the screening of test samples to quantify any functional activity, either agonist or antagonist, that they may exert against human MR.

As depicted in **Figure 1**, INDIGO's 96-well format nuclear receptor assay systems feature a streamlined assay protocol optimized to accommodate both low- and high-throughput plate-processing applications. In brief, Reporter Cells are dispensed into wells of the assay plate and then immediately dosed with the user's test compounds. Following an overnight incubation, the treatment media are discarded and Luciferase Detection Reagent (LDR) is added. The intensity of light emission from the ensuing luciferase reaction provides a sensitive measure that is directly proportional to the relative level of MR activity in the reporter cells.

Figure 1. Standard assay scheme for 96-well format Nuclear Receptor Reporter Assays



▪ The Assay Chemistry ▪

INDIGO's nuclear receptor reporter assay systems capitalize on the extremely low background, high-sensitivity, and broad linear dynamic range of bio-luminescence reporter gene technology.

Reporter Cells incorporate the cDNA encoding beetle luciferase, a 62 kD protein originating from the North American firefly (*Photinus pyralis*). Luciferase catalyzes the mono-oxidation of D-luciferin in a Mg^{+2} -dependent reaction that consumes O_2 and ATP as co-substrates, and yields as products oxyluciferin, AMP, PP_i , CO_2 , and photon emission. Luminescence intensity of the luciferase reaction is quantified using a **luminometer**, and is reported in terms of Relative Light Units (RLU's).

INDIGO's 96-well format Nuclear Receptor Reporter Assay Systems feature a luciferase detection reagent specially formulated to provide stable light emission between 15 and 90+ minutes after initiating the luciferase reaction (refer to APPENDIX 2 for more information). Therefore, there is no requirement to sequentially process-and-read single 96-well format assay plates. However, when manually processing one or more assay plates, or when batch processing larger numbers of assay plates using an auto-dispenser, it is important to incorporate a 15 minute reaction-rest period to attain signal stability before quantifying RLU values. By doing so, the signal output from all sample wells, from one plate to the next, may be directly compared.

II. Product Components & Storage Conditions

This Human MR Reporter Assay System contains materials to perform three distinct groups of assays in a 96-well plate format. Reagents are configured so that each group will comprise 32 assays. If desired, however, reagents may be combined to perform either 64 or 96 assays.

The individual aliquots of MR Reporter Cells and Detection Solutions I & II are provided as single-use reagents. Once thawed, reporter cells can NOT be refrozen with any hope of retaining downstream assay performance. Therefore, extra volumes of these reagents should be discarded after assay set-up.

Assay kits are shipped on dry ice. Upon receipt, individual kit components may be stored at the temperatures indicated on their respective labels. Alternatively, the entire kit may be further stored at -80°C. To ensure maximal viability, “Reporter Cells” must be maintained at -80°C until immediately prior to use.

The date of product expiration is printed on the Product Qualification Insert (PQI) enclosed with each kit.

<u><i>Kit Components</i></u>	<u><i>Amount</i></u>	<u><i>Storage Temp.</i></u>
▪ MR Reporter Cells	3 x 0.70 mL	-80°C
▪ Cell Recovery Medium 1 (CRM-1)	1 x 10.5 mL	-20°C
▪ Compound Screening Medium 2 (CSM-2)	1 x 35 mL	-20°C
▪ Aldosterone, 10 µM (in DMSO) (control agonist for MR)	1 x 30 µL	-20°C
▪ Detection Substrate	3 x 2.0 mL	-80°C
▪ Detection Buffer	3 x 2.0 mL	-80°C
▪ 96-well plate frame	1	ambient
▪ Snap-in, 8-well strips (white, sterile, cell-culture ready)	12	ambient

III. Alternative Applications for this Reporter Assay

This nuclear receptor reporter assay system is a sensitive and versatile research tool. As such, the user may configure these assays in several ways to achieve different research objectives.

The “Assay Procedure” begins in Section V. It provides specific instructions for performing each MR assay, including alternative set-ups at Step 2 for the user to choose from. For example, these reporter assays may be configured to perform agonist dose-curves (Alternate 2A) or antagonist dose-curves (Alternate 2C), or to perform single-point screening of test compounds for agonist activities (Alternate 2B) or antagonist activities (Alternate 2D).

Due to the experiment-specific nature of these steps, these alternative procedures (and their attendant “NOTES”) are intended to serve as guidelines only. They are offered to assist researchers in formulating an assay design that is best suited to achieve their specific research goals.

Human MR Reporter Assay

Aldosterone Dose-Response, Normalized

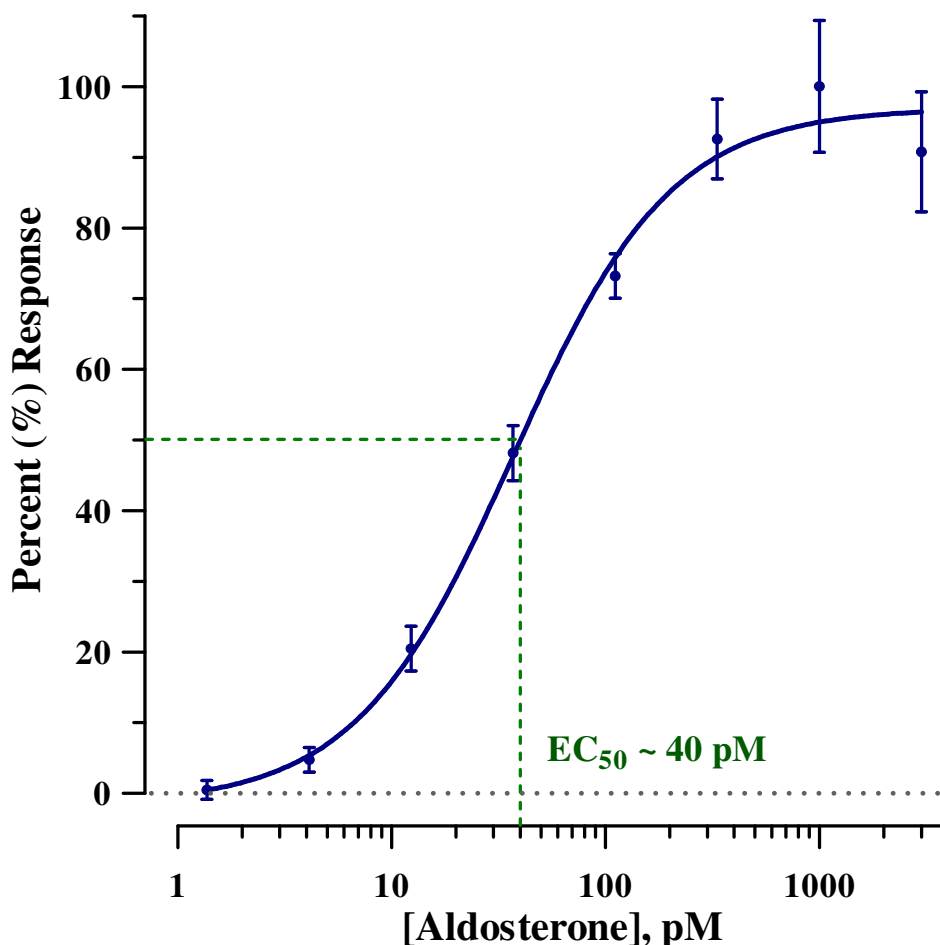


Figure 2. Agonist dose-response of the MR Reporter Assay System.

MR dose-response assays were performed according to the protocol provided in this Technical Manual. Reporter cells were treated with aldosterone at the following final concentrations: 3000, 1,000, 333, 111, 37.0, 12.3, 4.12, 1.37 and 0 pM. Treatment media were removed after 24 hr and LDR was applied directly to the cells. Luminescence was quantified using a Tecan GENios Pro plate-reading luminometer. Average relative light unit (RLU) and respective standard deviation values were determined. RLU values were normalized such that the lowest RLU and the highest RLU values from each data set are defined as 0% and 100%, respectively. Non-linear regression was performed. Error bars depict %CV. Dashed lines depict a representative EC_{50} concentration of aldosterone in this MR assay.

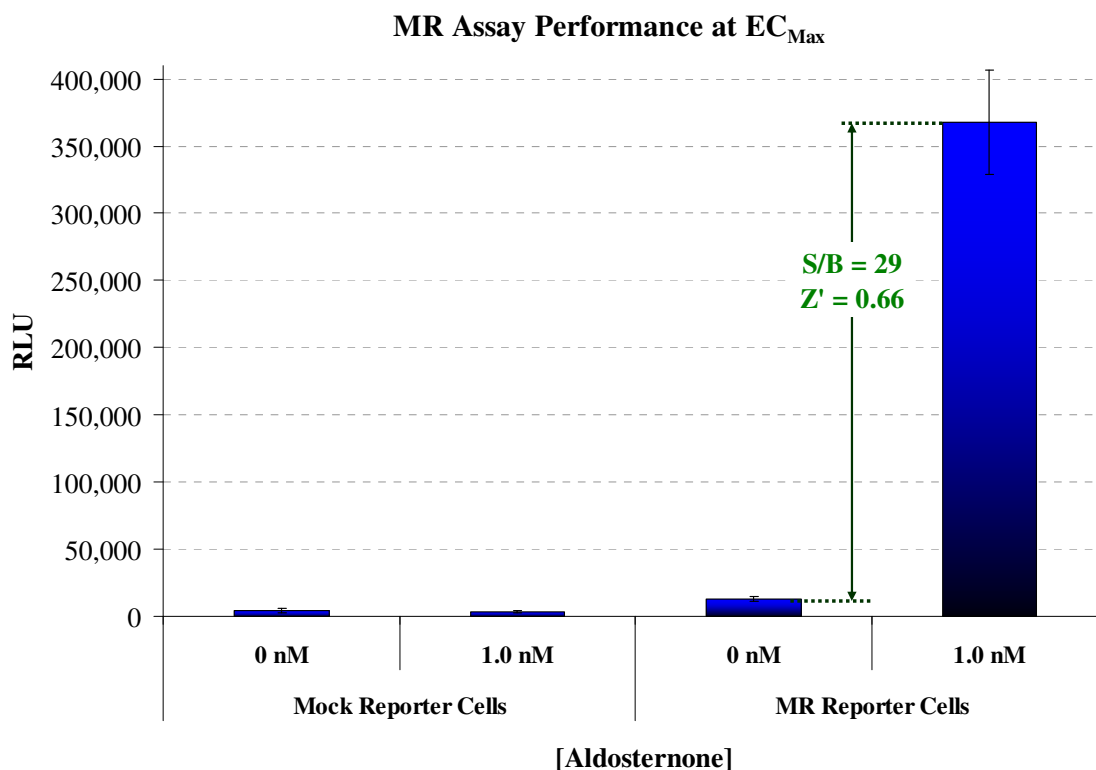


Figure 3. Validation of the MR reporter assay for screening applications.

MR reporter cells were treated with media alone, or media supplemented with 1 nM aldosterone. To assess the amount of background signal contributed by any other factor(s) that cause gratuitous activation of the luciferase reporter gene, “mock” reporter cells were specially prepared to contain only the luciferase vector (*i.e.*, cells withOUT the MR expression vectors. Mock reporter cells are not provided with assay kits). Mock reporter cells and the MR reporter cells were cultured, treated with aldosterone, and processed in identical manner. A minimum of four replicate assay wells were processed for each treatment condition. Signal-to-background (S/B) and Z’ values were calculated as described by Zhang, *et al.* (1999)¹.

NOTE: RLU values will vary slightly between different production lots of reporter cells, and can vary *significantly* between different makes and models of luminometers.

RESULTS & CONCLUSIONS: In this particular experiment, MR reporter cells treated with 1 nM aldosterone yielded S/B = 29 and a calculated Z’ value of 0.66. Similarly treated mock reporter cells demonstrate only low levels of background luciferase activity (< 1.1% of EC_{Max} treatment). Thus, luminescence results from ligand-activation of the exogenous human MR expressed in these reporter cells. These data confirm the robust performance of this MR Reporter Assay System, and demonstrate its suitability for use in HTS applications.¹

¹ Zhang JH, Chung TD, Oldenburg KR. (1999) A Simple Statistical Parameter for Use in Evaluation and Validation of High Throughput Screening Assays. *J Biomol Screen.*:4(2), 67-73.

$$Z' = 1 - [3 * (SD^{Control} + SD^{Background}) / (RLU^{Control} - RLU^{Background})]$$

IV. Materials to be Supplied by the User

The following materials must be provided by the user, and should be made available prior to initiating the assay procedure:

DAY 1

- cell culture-rated hood.
- 37°C, humidified 5% CO₂ incubator for mammalian cell culture.
- 37°C water bath (*Step 3*).
- sterile multi-channel media basins (such as the Heathrow Scientific "Dual-Function Solution Basin"), *or* deep-well plates, *or* appropriate similar vessel for generating dilution series of control ligand(s) and user's test compound(s) (*Step 2*).
- *optional*: antagonist control compound (*Step 2*, Alternative Protocols C & D).
- 70% alcohol wipes (*Steps 3 & 4*).
- pipette & sterile tips appropriate for the transfer of 100 µl volumes (*Steps 5 & 6*).
The use of an electronic pipette capable of repeat-dispensing is recommended.

DAY 2

- plate-reading luminometer (*Step 10*).
- a vacuum & liquid-trap apparatus connecting to a single pipette tip or, preferably, an 8-pin manifold (*e.g.*, Wheaton Science Microtest Syringe Manifold, # 851381), for use in aspirating media (*Step 12*).
- pipette & tips, as described above (*Step 13*).

V. Assay Procedure

Review the entire assay protocol before starting.

Completing the assay requires an overnight incubation. *Steps 1-8* are performed on **Day 1**, requiring 1 – 2 hours to complete. *Steps 9-15* are performed on **Day 2**, requiring \leq 1 hour to complete.

DAY 1: All steps must be performed using proper aseptic technique.



- 1) Remove **Cell Recovery Medium 1 (CRM-1)** and **Compound Screening Medium 2 (CSM-2)** from freezer storage and thaw.
 - Room temperature **CSM-2** is used in the next step. A water bath may be used to facilitate rapid thawing of **CSM-2**.
 - Thaw **CRM-1** and warm to 37°C using a water bath. Pre-warmed **CRM-1** is required in *Step 3*.

ALTERNATIVE 2A: Agonist Dose-Response Assays (e.g., as depicted in Figure 2)

Use **CSM-2** to prepare a dilution series of 2x-concentrated control agonist (aldosterone) AND an appropriate dilution series of 2x-concentrated test compound(s) to be assayed.

NOTE 2.0 In *Step 6*, 100 µl of the prepared [CSM + test cmpd] is added into an assay well already containing 100 µl of Reporter Cells. Hence, to achieve the desired *final* concentration of test compound in the assay one must prepare and dispense a “2x-concentration” of the test compound(s) (i.e., [CSM + 2x test cmpd]).

NOTE 2.1 When generating dose-response curves, it is recommended to perform all measurements in at least triplicate. In *Step 6*, 100 µl of [CSM + 2x test cmpd] will be added per well of the assay plate. Therefore, devise an appropriate compound dilution scheme to yield a final volume of [CSM + 2x test cmpd] that is slightly greater than 300 µl, thus allowing accurate volume transfers into each of the triplicate wells of the assay plate.

NOTE 2.2 When using aldosterone as the positive-control agonist, we find the following assay concentration range provides a complete dose-response: 3000, 1000, 333, 111, 37.0, 12.3, 4.12, 1.37 and 0 picoMolar (pM; 10^{-12} Molar), as depicted in **Figure 2**. However, as explained in *Note 2.0*, a 2x-concentrated dilution series of both the positive-control and test compounds are required.

[*Hint*: Generating this dilution series for aldosterone may be achieved by following the example presented in **APPENDIX 1**. In brief, use a portion of CSM-2 to first perform a 55.5-fold dilution of the provided 10 µM aldosterone stock (e.g., mix 10 µl aldosterone stock with 545 µl of CSM). Use this intermediate stock to perform a subsequent 30-fold dilution to achieve the first desired 2x-concentration of 6000 pM aldosterone (containing 0.06% DMSO). Continue by using a portion of the 6000 pM solution to perform seven sequential 3-fold dilutions to produce 2000, 667, 222, 74.1, 24.7, 8.24 and 2.75 pM 2x-concentrated stocks. Neat CSM (or CSM supplemented with 0.06% DMSO; i.e., the highest concentration of “vehicle”) may be used to provide the “0 nM” control treatment.]

ALTERNATIVE 2B: Screening for Agonist Activities via Single-Point Assay

Use **CSM-2** to prepare a 2x-concentrated agonist "control" AND an appropriate 2x concentration of test compounds to be screened for agonist activity.

See *NOTE 2.0*.

This MR Reporter Assay System kit includes a 10 μM stock solution of **Aldosterone**, a potent agonist of MR that may be used as a positive-control. An assay concentration of 1000 pM aldosterone typically provides $\geq 95\%$ activation of MR (Figure 2). Hence, 2000 pM aldosterone will provide a 2x-concentrated agonist that is a suitable positive-control reference. Refer to *Note 2.2* for a recommended dilution scheme to prepare the appropriate 2x-concentrated aldosterone solution.

NOTE 2.3 As a general rule, when an organic solvent is used to generate primary stock solutions of test compounds, we recommend that the user devise a dilution scheme so that the concentration of organic solvent in [CSM + 2x test cmpd] does not exceed 0.2% (*i.e.*, *minimally* a 500-fold dilution into CSM). This corresponds to a final assay concentration of 0.1% organic solvent.

NOTE 2.4 In *Step 6*, 100 μl of the prepared [CSM + 2x test cmpd] will be added per well of the assay plate. If single-point assays are to be made, prepare a volume of each test compound media that is slightly greater than 100 μl , thus allowing accurate volume transfers into respective assay wells. This assay kit provides 35 ml of CSM. Therefore, plan dilution schemes carefully so that the total volume of CSM required to perform dilutions of the positive- and negative-controls AND all test compounds does not exceed 35 ml.

ALTERNATIVE 2C: Antagonist Dose-Response Assays.

A common method of performing receptor inhibition studies is to prepare a co-mix of a known agonist (at a constant concentration typically between EC₅₀ – EC₈₅) AND a dilution series of the test compound(s) to be evaluated for antagonist activity. This MR Reporter Assay System kit includes a 10 µM stock solution of **Aldosterone**, a potent agonist of MR (Figure 2) that may be used to setup such receptor inhibition studies.

See *NOTE 2.0*.

Supplement a portion of **CSM-2** with an appropriate volume of aldosterone to generate a sufficient stock volume of [CSM + 2x aldosterone]. Use this [CSM + 2x aldosterone] stock to then prepare a 2x-concentrated dilution series of each test compound to be evaluated for antagonist activity. If desired, also prepare a dilution series of 2x-concentrated positive-control antagonist (supplied by the user).

NOTE 2.5 333 pM aldosterone typically corresponds to ~EC₇₅ in this reporter assay. Hence, it presents a reasonable assay concentration of agonist to be used in setting up inhibition studies. Refer to *NOTE 2.2* for a suggested dilution scheme to prepare [CSM + 2x aldosterone].

NOTE 2.6 As a *general rule*: when an organic solvent is used to generate primary stock solutions of test compounds, we recommend that the user devise a dilution scheme so that the concentration of organic solvent in [CSM + 2x aldosterone + 2x test cmpd] does not exceed 0.2% (*i.e.*, *minimally* a 500-fold dilution into CSM). This corresponds to a final assay concentration of 0.1% organic solvent.

NOTE 2.7 When generating antagonist dose-response curves, it is recommended to perform all measurements in at least triplicate. In *Step 6*, 100 µl of [CSM + 2x aldosterone + 2x test cmpd] will be added per well of the assay plate. Therefore, devise an appropriate compound dilution scheme to yield a final volume of [CSM + 2x aldosterone + 2x test cmpd] that is slightly greater than 300 µl, thus allowing accurate volume transfers into each of the triplicate wells of the assay plate.

ALTERNATE 2D: Screening for Antagonist Activities via Single-Point Assay

A common method of performing single-point receptor inhibition screens is to prepare a co-mix of a known agonist (at a concentration typically between EC₅₀ – EC₈₅) AND a single test concentration of the candidate antagonist compounds to be evaluated. This MR Reporter Assay System kit includes a 10 µM stock solution of **Aldosterone**, a potent agonist of MR (Figure 2) that may be used to setup such receptor inhibition screens.

See *NOTE 2.0*.

See *NOTE 2.5*.

Supplement a portion of **CSM-2** with an appropriate volume of aldosterone to generate an appropriate stock volume of [CSM + 2x aldosterone]. Refer to *NOTE 2.2* for a recommended dilution scheme to prepare [CSM + 2x aldosterone]. Use this stock of [CSM + 2x aldosterone] to then prepare a 2x-concentrated dilution of each test compound to be screened for antagonist activity. If desired, also prepare an appropriate dilution of 2x-concentrated positive-control antagonist (supplied by the user).

See *NOTE 2.6*.

NOTE 2.8 In *Step 6*, 100 µl of the prepared [CSM + 2x aldosterone + 2x test cmpd] will be added per well of the assay plate. If single-point assays are to be made, prepare a volume of each test compound media that is slightly greater than 100 µl, thus allowing accurate volume transfers into respective assay wells. This assay kit provides 35 ml of CSM to be used in preparing [CSM + 2x aldosterone + 2x test cmpd] for all 96 assays in this 3x 32 format assay kit. Plan dilution schemes carefully!

- 3) To perform 32 MR assay reactions, remove 1 tube of **MR Reporter Cells** from -80°C storage. Retrieve **CRM-1** from the 37°C water bath and sanitize the outside of the tube with a 70% ethanol swab. Transfer both tubes into a cell-culture hood. Perform a *rapid thaw* of the frozen cells by pipette-transferring 3.0 ml of the 37°C CRM-1 into the tube of frozen cells. Recap the tube of Reporter Cells and immediately place it in a 37°C water bath for at least 3 minutes.

NOTE: During this incubation step, work in an aseptic hood to *carefully* mount four sterile 8-well strips into the blank assay plate frame. Strip-wells are fragile. Note that they have keyed ends (square and round), hence, they will fit into the plate frame in only one orientation.

- 4) Retrieve the tube of Reporter Cell Suspension from the water bath. Sanitize the outside surface of the tube with a 70% alcohol swab, then transfer it into the cell culture hood.

- 5) Invert the tube of Reporter Cells several times to disperse any cell aggregates and gain an homogenous cell suspension. Dispense 100 µl of cell suspension into each of the 32 wells mounted in the plate frame.

NOTE: Take special care to prevent cells from settling during the period of pipette-transfer. Lack of precision in transferring uniform volumes across the assay plate, and/or allowing cells to settle during the dispensing process, will cause well-to-well variation in the assay. For improved precision, speed, and ergonomic comfort, *the use of an electronic repeat-dispensing pipette is recommended.*

- 6) Add 100 µl of 2x-concentrated treatment media (prepared in *Step 2*) to appropriate wells of the assay plate.

- 7) Replace the plate's lid and transfer it into a 37°C, humidified 5% CO₂ incubator for 22 - 24 hours.

NOTE: Ensure a high-humidity (≥ 90%) environment within the cell culture incubator. This is critical to prevent the onset of deleterious "edge-effects" in the assay plate.

- 8) For greater convenience on Day 2, retrieve the appropriate number of tubes of **Detection Substrate and Detection Buffer** from -80°C storage and place them in a dark refrigerator (4°C) to thaw overnight.

(Continue on DAY 2)

DAY 2: Subsequent manipulations do *not* require special regard for aseptic technique and, therefore, may be performed on a bench top.

- 9) 30 minutes before intending to quantify MR activity, remove **Detection Substrate** and **Detection Buffer** from the refrigerator and place them in a low-light area so that they may equilibrate to room temperature. Once at room temperature, gently invert each tube several times to ensure homogenous solutions.
- NOTE:* Do NOT actively warm Detection Substrate above room temperature. If these solutions were not allowed to thaw overnight at 4°C, a room temperature water bath may be used to expedite thawing.
- 10) Turn on the luminometer. Set the instrument to perform a single 5 second “plate shake” prior to reading the assay plate. Set the read time for 0.5 second per well.
- NOTE:* Many luminometers require a “warm up” period of 15 minutes *or more* before the photo-multiplier tube (PMT) attains maximal precision in reading very low luminescence signal.
- 11) *Immediately before proceeding to Step 12*, combine entire volumes of Detection Substrate and Detection Buffer to generate **Luciferase Detection Reagent (LDR)**. Mix gently to avoid foaming.
- 12) After 22-24 hours of incubation, remove the assay plate from the incubator. Remove the plate’s lid. Remove media contents from each well.
- NOTE:* Because the assay plate is composed of a frame with snap-in strip-wells, the practice of physically ejecting media *via* a sweeping downward movement is NOT advised. Complete removal of the media is efficiently performed by tilting the plate on edge and aspirating media using an 8-pin manifold (*e.g.*, Wheaton Science Microtest Syringe Manifold, # 851381) affixed to a vacuum-trap apparatus.
- 13) Add 100 µl of room temperature **LDR** to each well of the assay plate.
- NOTE:* *Pipette carefully to avoid bubble formation!* Scattered micro-bubbles will not pose a problem. However, bubbles covering the surface of the reaction mix, or large bubbles clinging to the side walls of the well, will cause lens-effects that may significantly degrade the accuracy and precision of the assay data. In the event of excessive bubble formation during processing, spin the assay plate (with lid) at *low speed* for 1-2 minutes using a room temperature centrifuge fitted with counter-balanced plate carriers.
- 14) Allow the assay plate to rest at room temperature for at least 15 minutes after the addition of LDR. Do not shake the assay plate during this period.
- NOTE:* See **APPENDIX 2** for information regarding signal stability.
- 15) Read the assay plate anytime between 15 - 90 minutes after adding LDR.

VI. Related Products

MR Family of Assay Products	
<i>Product No.</i>	<i>Product Descriptions</i>
IB00501-32	Human MR Reporter Assay System 3x 32 assays in 96-well format
IB00501	Human MR Reporter Assay System 1x 96-well format assay
IB00501-B10	Human MR Reporter Assay System (Bulk Pack) Bulk Reagent Pack for 10x 96-well plates
IB00502	Human MR Reporter Assay System 1x 384-well format assays
IB00502-B10	Human MR Reporter Assay System (Bulk Pack) Bulk Reagent Pack for 10x 384-well plates
Alternative volumes of Bulk Assay Reagents may be custom manufactured to better accommodate Customer needs. Please Inquire.	

LIVE Cell Multiplex (LCM) Assay	
<i>Product No.</i>	<i>Product Descriptions</i>
LCM-01	Reagent volumes sufficient to perform 96 Live Cell Assays in 1x96- well, or 2x48-well, or 3x32-well NR assay plates
LCM-05	Reagents in 5x-bulk volume to perform 480 Live Cell Assays in any combination of 1x96-, 2x48-, or 3x32-well NR assay plates
LCM-10	Reagents in 10x-bulk volume to perform 960 Live Cell Assays in any combination of 1x96-, 2x48-, or 3x32-well NR assay plates

Please refer to INDIGO Biosciences website for updated product offerings.

www.indigobiosciences.com

VII. Limited Use Disclosures

Products commercialized by INDIGO Biosciences, Inc. are for RESEARCH PURPOSES ONLY – not for therapeutic or diagnostic use in humans. Other applications of this product may require licenses from others, including one or more of the institutions listed below.

The method of recombinant expression of *Coleoptera* luciferase is covered by U.S. Patent 5,583,024. INDIGO Biosciences, Inc. has entered into a license agreement with The Regents of the University of California (Oakland, CA) for commercial application of the cDNA encoding the native luciferase of *Photinus pyralis*.

This product, which incorporates mammalian cells expressing recombinant NR3C2, is the subject of intellectual property owned by The Salk Institute for Biological Studies (Salk), and licensed to INDIGO Biosciences. The purchase of this product conveys to the buyer the non-transferable right to use the purchased amount of the product and components of the product in research conducted by the buyer (whether the buyer is an academic or for-profit entity). The buyer cannot sell or otherwise transfer (a) this product (b) its components or (c) materials made using this product or its components to a third party or otherwise use this product or its components or materials made using this product or its components for Commercial Purposes. The buyer may transfer information or materials made through the use of this product to a scientific collaborator, provided that such transfer is not for any Commercial Purpose, and that such collaborator agrees in writing (a) not to transfer such materials to any third party, and (b) to use such transferred materials and/or information solely for research and not for Commercial Purposes. Commercial Purposes means any activity by a party for consideration and may include, but is not limited to: (1) use of the product or its components in manufacturing; (2) use of the product or its components to provide a service, information, or data to a third party; (3) use of the product or its components for therapeutic, diagnostic or prophylactic purposes; and/or (4) resale of the product or its components, whether or not such product or its components are resold for use in research. In addition, any use of the this technology outside of this product or the product's intended use, requires a separate license from the Salk. INDIGO Biosciences will not assert a claim against the buyer of infringement of patents owned by INDIGO Biosciences and claiming this product based upon the manufacture, use or sale of a therapeutic, clinical diagnostic, vaccine or prophylactic product developed in research by the buyer in which this product or its components was employed, provided that neither this product nor any of its components was used in the manufacture of such product or for a Commercial Purpose. If the purchaser is not willing to accept the limitations of this limited use statement, INDIGO Bioscience is willing to accept return of the product with a full refund. For information on purchasing a license to this product for purposes other than research, contact Licensing Department, INDIGO Biosciences, Inc., 1981 Pine Hall Rd, State College, PA, 16801, USA, Phone (814) 234-1919, Fax (814) 272-0152; or The Salk Institute for Biological Studies, 10010 North Torrey Pines Road, La Jolla, CA 92037, Attn.: Office of Technology Management & Development, Phone: (858) 453-4100 extension 1703, Fax: (858) 546-8093.

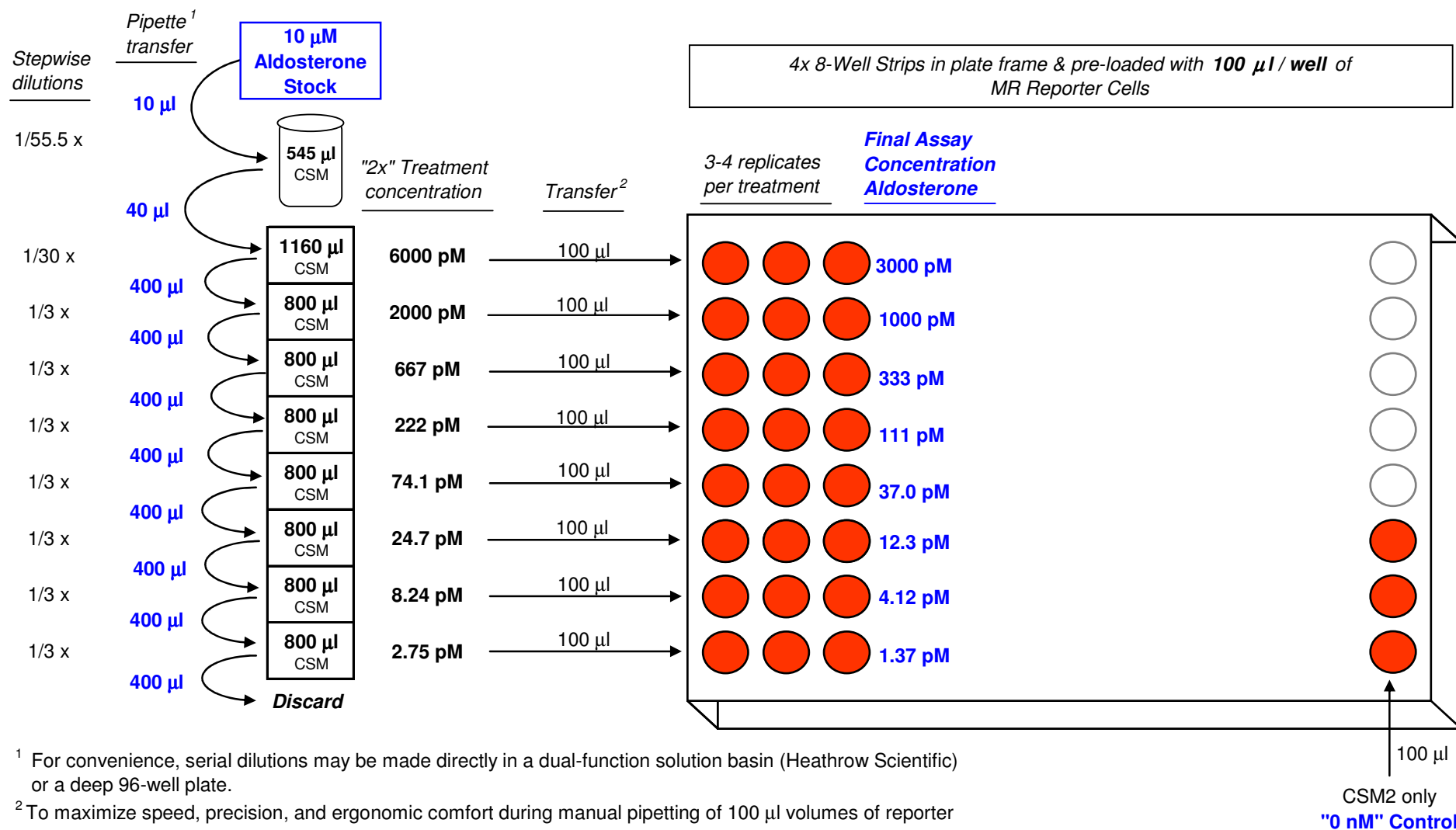
“CryoMite” is a Trademark TM of INDIGO Biosciences, Inc.

Product prices, availability, specifications and claims are subject to change without prior notice.

© 2011 INDIGO Biosciences, Inc. All Rights Reserved.

APPENDIX 1

Example Dilution Scheme & Setup of MR Control Agonist Dose-Response Assay



¹ For convenience, serial dilutions may be made directly in a dual-function solution basin (Heathrow Scientific) or a deep 96-well plate.

² To maximize speed, precision, and ergonomic comfort during manual pipetting of 100 µl volumes of reporter cells and treatment media, the use of an electronic, 8-channel, multi-dispensing P1000 pipette is recommended.

APPENDIX 2

Signal Stability of the Nuclear Receptor Reporter Assay

The human ER β Reporter Assay System is used here to demonstrate the light emission profile characteristic of INDIGO Biosciences' nuclear receptor assay system products.

As seen in **Figure 4**, between 5 and 15 minutes after adding LDR to assay wells the initial intensity of luminescence decays by 10-12%. However, luminescence signal stabilizes and remains essentially constant over the ensuing 75 minute reaction period. From T=15 minute to T=90 minutes, average luminescence measured from the same set of assay wells deviate by *less than 5%*

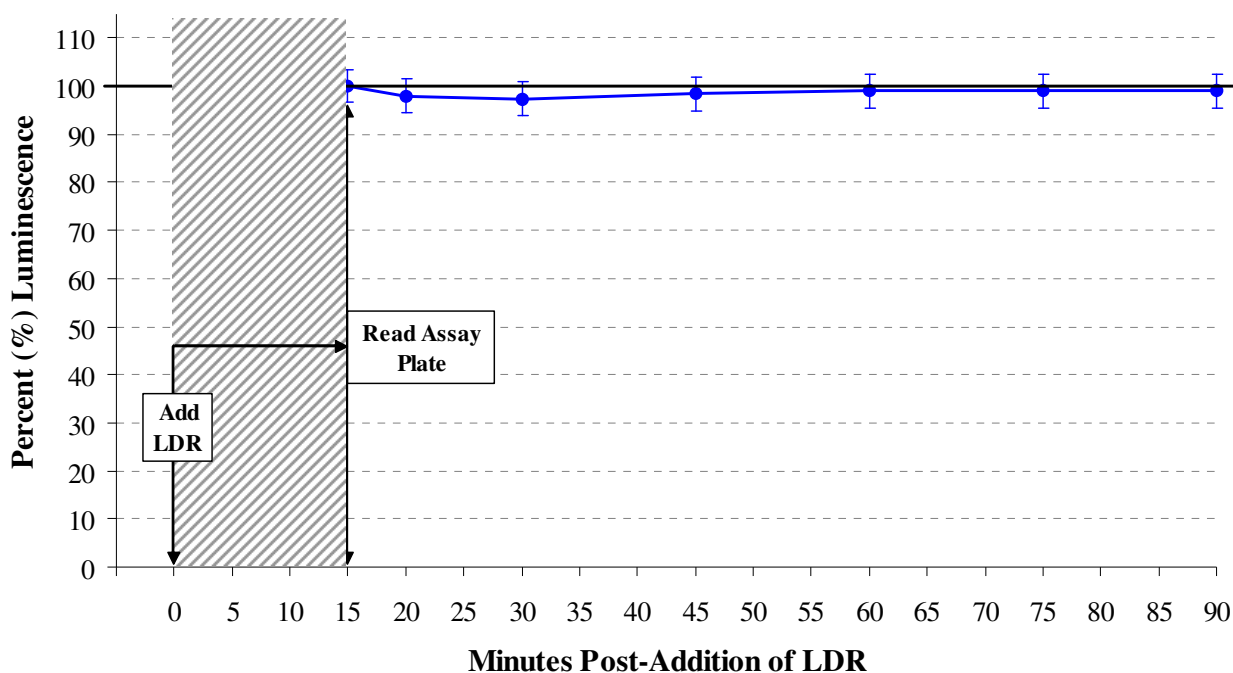


Figure 4. Stability of the luminescence signal. ER β reporter cells were cultured in 8 replicate wells of a 96-well assay plate, treated with 1 nM 17- β -estradiol for 24 hr, and media were replaced with LDR according to the protocol provided in Technical Manual #00411. Following an initial 5 minute rest period at room temperature, luminescence intensities were quantified by integrating light emission over 500 mSec. After the initial 5 minute time point, the assay plate was re-read at 10, 15, 20, 30, 45, 60, 75 and 90 minutes post-addition of LDR. Average RLU and respective standard deviation values were calculated, then normalized so that the luminescence signal at 15 minutes = 100%.

Allowing a *minimum* rest period of 15 minutes after the addition of LDR is particularly important for HTS users. Due to the logistics of batch-processing large numbers of assay plates, a significant time differential may occur between processing the first and last assay plates. Nonetheless, due to the stable emission profile of the luciferase reaction between 15 - 90 minutes, HTS users may be confident in comparing signal output from test samples in the first assay plate to those in the last plate in the stack.